

AARA Questionnaire for Candidates

Candidate Name: Chad Magendanz

1. Do you support Washington State Initiative 200?
 - a. Yes
 - b. No
 - c. Not an important issue in my opinion
 - d. Prefer not to answer

Our objective should be to create a system that is blind to race or gender, where everyone has equal opportunity to pursue the American Dream. Promises of “equal outcomes” should be exposed for what they are: the road to more identity politics, socialism and mediocrity.

2. Do you support building safe injection sites somewhere in Washington State?
 - a. Yes
 - b. No
 - c. Not an important issue in my opinion
 - d. Prefer not to answer

Intravenous drug use is dangerous and illegal, and we would be better to spend the money on treatment programs.

3. Do you support personal income tax or capital gains tax for Washington State?
 - a. Yes
 - b. No
 - c. Not an important issue in my opinion
 - d. Prefer not to answer

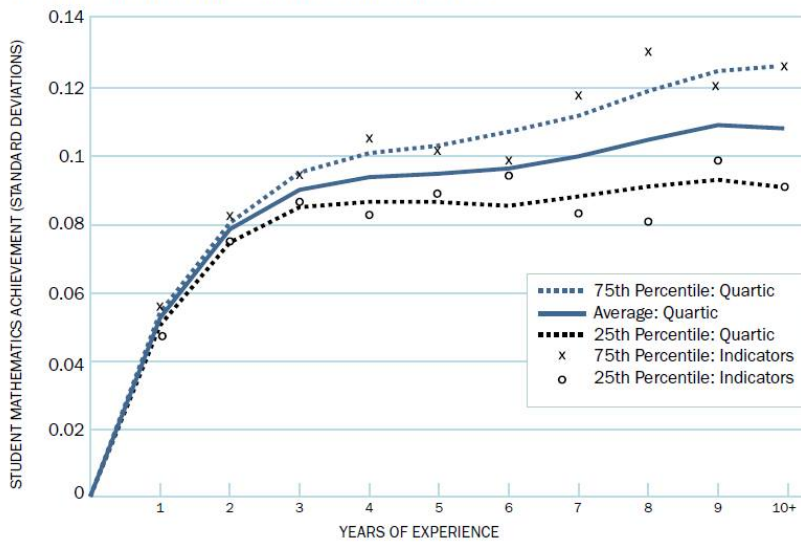
Washington voters have been asked on 11 separate occasions to adopt a state personal income tax or corporate income tax. Only the first vote, in 1932, was successful, and that measure was subsequently thrown out by the state Supreme Court with a 5-4 decision on September 8, 1933.

It's also an extremely volatile source of revenue, making it hard to maintain services through normal economic cycles.

4. Do you think teachers' income should be determined by their performance or seniority?
 - a. Performance
 - b. Seniority
 - c. Not an important issue in my opinion
 - d. Prefer not to answer
 - e. A combination of these 2 factors. Please specify:

Most [research I've seen](#) shows that the benefits of teacher experience plateau around 4 years and are more modest beyond that. Initial steps in the salary schedule should reflect that, but I believe that performance bonuses are critical to recognizing the most effective teachers. We should also differentiate pay to attract and retain teachers with high-demand skillsets (e.g. special education, ELL, STEM, etc.)

Figure 5: Returns to Teaching Experience for Prototypical Teachers, Across School Professional Environments



Note: In their analysis, the authors used administrative data on teachers and students in a large, urban school district in the southern United States in 2000–2009.

Source: Matthew A. Kraft and John P. Papay, “Can Professional Environments in Schools Promote Teacher Development? Explaining Heterogeneity in Returns to Teaching Experience,” *Educational Evaluation and Policy Analysis* 36, no. 4 (2014): 476–500.

© 2016 The Learning Policy Institute

5. Do you support Washington State to be a “sanctuary state”?
 - a. Yes
 - b. **No**
 - c. Not an important issue in my opinion
 - d. Prefer not to answer

State and local authorities are obligated to obey and enforce federal laws. While I feel federal immigration reform should be an immediate priority for Congress (starting with an expansion of our work visa programs), local municipalities shouldn’t pick and choose which of current laws to enforce.

6. Can you briefly describe the top 3 bills you want to sponsor if getting elected? (Optional)

1. Open up new opportunities for small and medium businesses to offer more internships to high school and college students, reducing Labor & Industry regulatory barriers (e.g. unemployment insurance and worker’s compensation) and expanding “training wage” provisions.

2. Build on my success with the WA Cybercrime Act to define expectations for privacy and data confidentiality, incorporating elements of the GDPR.

3. The Elections Security Act, which corrects a 2015 Court of Appeals decision and enables anonymized ballot images to be made available to public records request, allowing independent verification of election tallies and the ability for individual voters to confidentially ensure their ballots were recorded accurately.